

Carrying out the update

First download the Updater from our IFS website www.graupner-ifs-system.de:

1. To do this you must have installed on your PC a version of “Software for programming device XZ-P1 IFS” with the appropriate USB drivers, together with an XZ-P1 IFS programming device connected to the PC, or an XZ-Z1 IFS telemetry station.

2. Please set your IFS product - individually - to computer programming mode before starting the Updater; this is the procedure:

For receivers and satellite receivers hold the PROG button on the receiver pressed in while you switch the receiver on. The Status LED glows orange. Release the PROG button again.

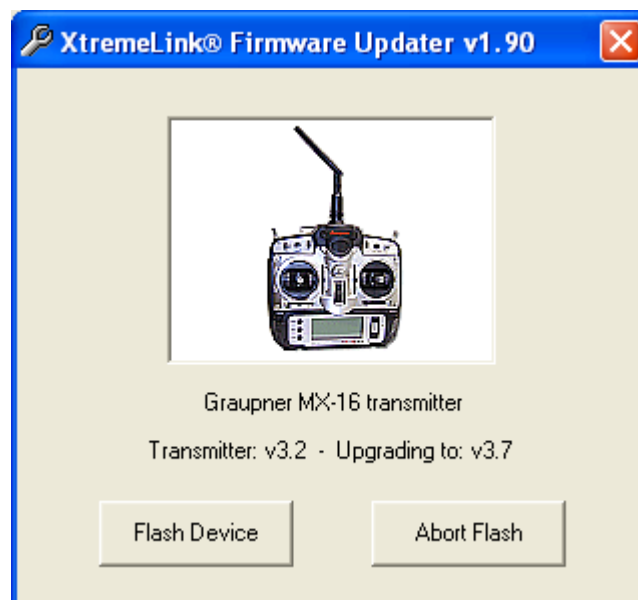
For transmitter modules hold the PROG button pressed in while you switch the transmitter on, then continue to hold the PROG button pressed in while the Status LED goes out, glows green, then red, and finally orange; this process lasts about twelve seconds. Release the PROG button again.

3. Double-click on Updater to launch the program, and confirm any security warning generated by your operating system. The opening screen of the Updater appears, displaying the internal version number of the Updater. This version number (in the screen-shot v1.90) has nothing to do with the version number of the individual firmware updates for the IFS products.

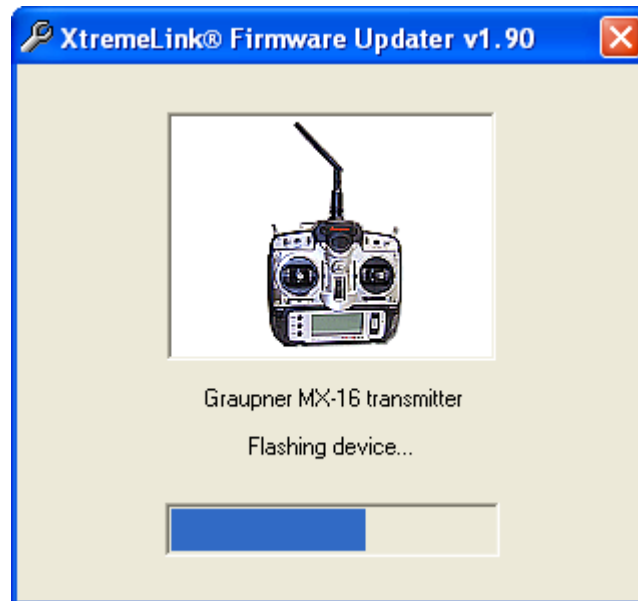


4. Click on the “Find Device” button.

Note: the following screen-shots illustrate the update process using an mx-16 iFS transmitter as an example.



5. This screen-shot shows the firmware version currently installed in the transmitter (v3.2). If you wish to update to a later firmware version (in this case: v3.7), simply click on the “Flash Device” button. If you want to interrupt the procedure, click on “Abort Flash”.



6. The latest firmware version is now transferred, and an on-screen charge bar shows you the state of charge of the battery.



7. When the update is complete, you will see the message “Flash Complete!”. Click on the “OK!” button, and the Updater switches back to the opening screen, so that you can update additional components.